



VERTERÉ

high resolution phono cartridges

X T R A X

M y s t i c

D A R K



s a b r e



M a g n e t o



Here at Vertere, we take cartridge design seriously. Very seriously, in fact. From the earliest point of product conception, every cartridge in our range is expected to meet rigorous and exacting standards of objective record reproduction.

Our ultimate goal is simple. Our products are built to close that gap between you and your music's true sonic identity. To strip away every last inessential component from our audio hardware, and create fundamentals-focused listening equipment that reproduces a wholly honest reflection of the sound - as intended by the people who made it.

The aim is perfect objectivity from our products.

Perfection may prove ultimately impossible to attain, but in the pursuit of perfection, we intend to get as close as possible to that end goal.

So what does this pursuit of perfection mean to our cartridges?

Absolutely everything.

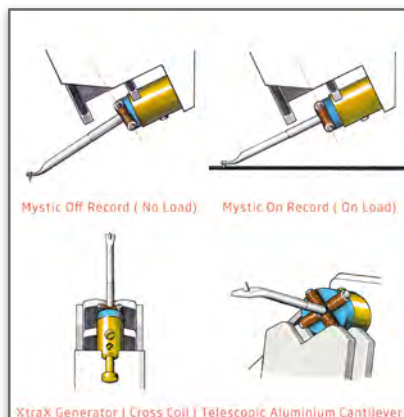


Touraj Moghaddam - Founder & CEO

Small they may be, but the cartridge is a fundamental element of vinyl reproduction - the foremost point of contact established with your record.

At Vertere, we believe this foundational connection between the music and the hardware to be pivotal. We see it as our first opportunity to preserve and nurture its purity.

Every cartridge we produce is designed to reduce the distance between you and your music. Sonic clarity, responsiveness and painstaking design decisions lie at the heart of every cartridge in our range. From the tooling and material of the stylus and the shape and dimensions of the cantilever, to coil formation, internal fixings, and chassis design; everything must exist harmoniously, every element must earn its place.



TRA
High Resolution MC Phono Cartridge

TRA
High Resolution MC Phono Cartridge

TRA
High Resolution MC Phono Cartridge



TRA
High Resolution MC Phono Cartridge

TRA
High Resolution MC Phono Cartridge

TRA
High Resolution MC Phono Cartridge

TRA
High Resolution MC Phono Cartridge

TRA
High Resolution MC Phono Cartridge

TRA
High Resolution MC Phono Cartridge

The XtraX represents a significant leap forward in the design development of Vertere cartridges - the most sonically defined and experientially impressive moving coil cartridge we've ever produced.

Internally, the XtraX features a brand new micro-elliptical stylus, tooled from solid, nude diamond and fitted to a telescopic cantilever for ever more precise control. In order to match the rich refinement of these new internal components, the XtraX outer shell has been completely re-optimised and re-designed from the ground up, and machined from a single piece of aluminium alloy.



XtraX 'floats' its generator at four fixing points that are precisely calibrated for peak performance, and an alignment ridge perfectly matches XtraX with any of our tone arms.

The result is, truthfully, jaw-dropping.

XtraX reaches a previously unachieved level of musical connection and presence, with a vastly elevated and more clearly defined harmonic structure.

The XtraX makes your music feel truly and almost completely alive - as if you're listening to the final take from behind the studio glass, or sat metres from the live performance.

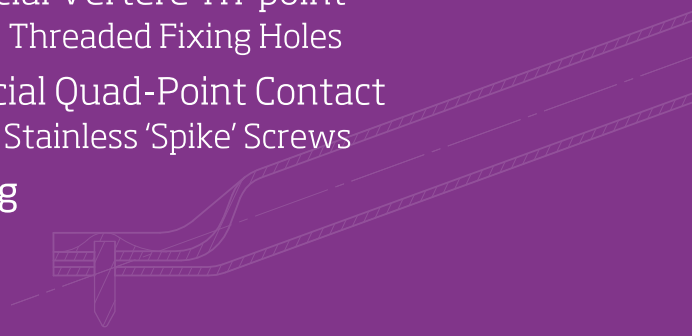
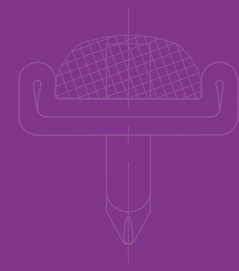
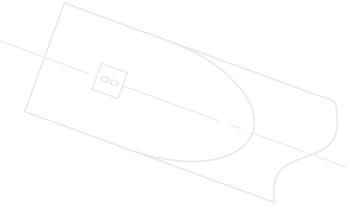
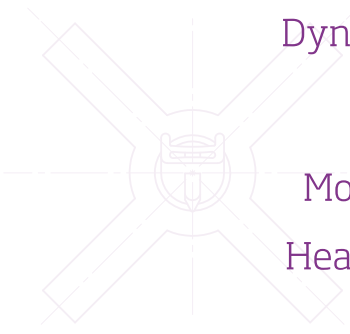
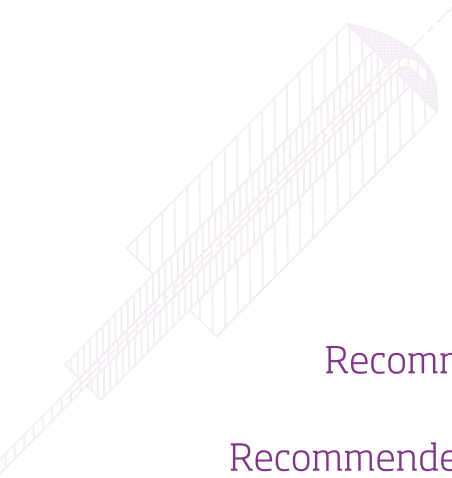


Even in the competitive realms of moving coil cartridge design, we believe XtraX comfortably sits amongst the most technically and musically proficient MC cartridges ever created.

 X T R A X 

Specifications

Generator Type	__ Moving Coil
Output	__ 0.45mV (@ 5cm/sec.)
Recommended Input Load	__ 850Ω - 1k5Ω 0pF - Max. 470pF
Recommended Tracking Weight	__ 2.05g (1.90g - 2.10g)
Frequency Response	__ 10Hz - 45kHz
Channel Separation	__ >28dB
Coil Resistance	__ 40Ω
Dynamic Compliance	__ 12 x 10 ⁻⁶ cm/dyne (@ 100Hz)
Magnet Type	__ Samarium-Cobalt
Mounting To Stylus	__ ≈ 7.8mm
Head-shell To Stylus	__ ≈ 18.5mm
Stylus	__ Nude Micro Elliptical Diamond (7.5 x 15.5 μm)
Cantilever	__ Aluminium - Telescopic
Headshell Mounting	__ Special Vertere Tri-point M2.5 Threaded Fixing Holes
Generator Fixing	__ Special Quad-Point Contact Four Stainless 'Spike' Screws
Weight	__ 11.2g



M y s t i c

M o v i n g C o i l P h o n o C a r t r i d g e



Vertere Mystic Moving Coil Phono Cartridge is designed and manufactured to exacting standards to provide an uncompromising musical experience.

Setting a high watermark for moving coil cartridge performance, Mystic delivers a staggering degree of accuracy and carefully optimised sonic detail.

Its class-leading generator utilises a samarium-cobalt magnet and pure copper cross coiling, alongside a micro-elliptical, bonded diamond stylus and a telescopic aluminium tube cantilever - treading the perfect balance between surface grip and frequency response.

The two piece body is machined from solid Aluminium alloy and mass tuned to the generator for optimum support and control of unwanted mechanical vibrations.

Mounting is via two threaded fixing holes with the supplied Vertere thumb screws that are also designed for correct coupling of the cartridge top 'plate' to the tonearm headshell.

Machined on the top plate of Mystic are three specifically designed contact points to provide the exact mechanical coupling area required.

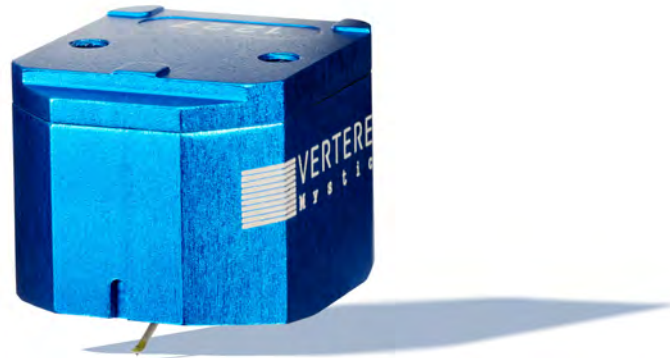


As with XtraX, the ridge on the top front assists with easy alignment and mounting onto any complementing Vertere tonearm.

The Micro Elliptical bonded diamond stylus tip designed for optimum tracking ability compromises nothing in higher frequencies or increased surface noise.

This provides a wide band frequency response of below 10Hz to over 40kHz that coupled with an output of 0.5mV will produce a lifelike dynamic range with incredible detail, low frequency punch, depth and precision.

With Mystic, sit back, relax and just enjoy the music ...



M y s t i c
M o v i n g C o i l P h o n o C a r t r i d g e

Specifications

Generator Type	__ Moving Coil
Output	__ 0.45mV (@ 5cm/sec.)
Recommended Input Load	__ 850Ω - 1k5Ω 0pF - Max. 470pF
Recommended Tracking Weight	__ 2.05g (1.90g - 2.10g)
Frequency Response	__ 10Hz - 40kHz
Channel Separation	__ > 28dB
Coil Resistance	__ 40Ω
Dynamic Compliance	__ 12 x 10 ⁻⁶ cm/dyne (@ 100Hz)
Magnet Type	__ Samarium-Cobalt
Mounting To Stylus	__ ≈ 7.8mm
Head-shell To Stylus	__ ≈ 17.0mm
Stylus	__ Micro Elliptical Diamond Bonded (7.5 x 15.5 μm)
Cantilever	__ Aluminium - Telescopic
Headshell Mounting	__ Special Vertere Tri-point M2.5 Threaded Fixing Holes
Generator Fixing	__ Glued To Body Top Platform Glued Two Pice Body
Weight	__ 9.1g





 V E R T E R É 
high resolution phono cartridges

Dark Sabre builds on the successes of its much-loved sister cartridge, whilst simultaneously introducing a revolutionary new level of musical clarity and definition never before experienced in a moving magnet design.



Both Sabre and Dark Sabre share the same generator, but a new fixing technique and cartridge profile in Dark Sabre has allowed for a profound performance improvement on its older sibling. A quad point screw formation on a newly designed, single-piece aluminium chassis allows Dark Sabre to distribute its mass much more evenly and effectively.

To complement this new design, Dark Sabre employs a steeper cantilever angle, resulting in higher dynamic range through improved contact with the groove.

The design improvements don't stop there. With Dark Sabre, we've further elevated the product specifications by employing the same nude diamond micro-elliptical stylus and similar telescopic cantilever found in XtraX. It all adds up to make Dark Sabre one of the most forward-thinking and cutting edge moving magnet cartridges ever built.

The effect on your music is remarkable - producing a depth of musical clarity and accuracy the likes of which we've never heard from a MM cartridge.



Specifications

Generator Type __ Moving Magnet

Output __ 4.3mV (@ 1kHz, 5cm/sec.)

Recommended Input Load __ 47k Ω
Max. 470pF

Recommended Tracking Weight __ 2.0g (1.9g - 2.1g)

Frequency Response __ 14Hz - 28kHz

Channel Separation __ >25dB

Coil Resistance __ 1 k Ω , @ 1kHz

Dynamic Compliance __ 10 x 10⁻⁶ cm/dyne
(@ 100Hz)

Magnet Type __ Alnico

Mounting To Stylus __ \approx 9.0mm

Head-shell To Stylus __ \approx 18,5mm

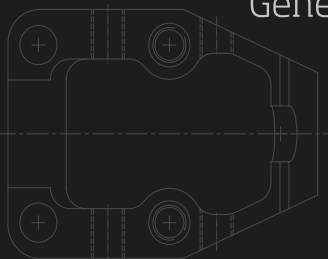
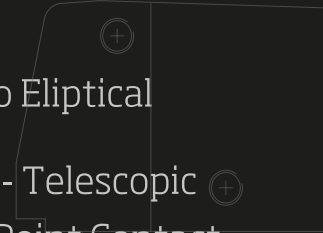
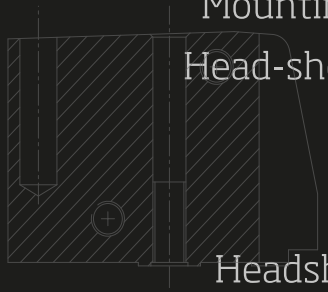
Stylus __ Nude | Micro Elliptical
(7.5 x 15.5 μ m)

Cantilever __ Aluminium - Telescopic

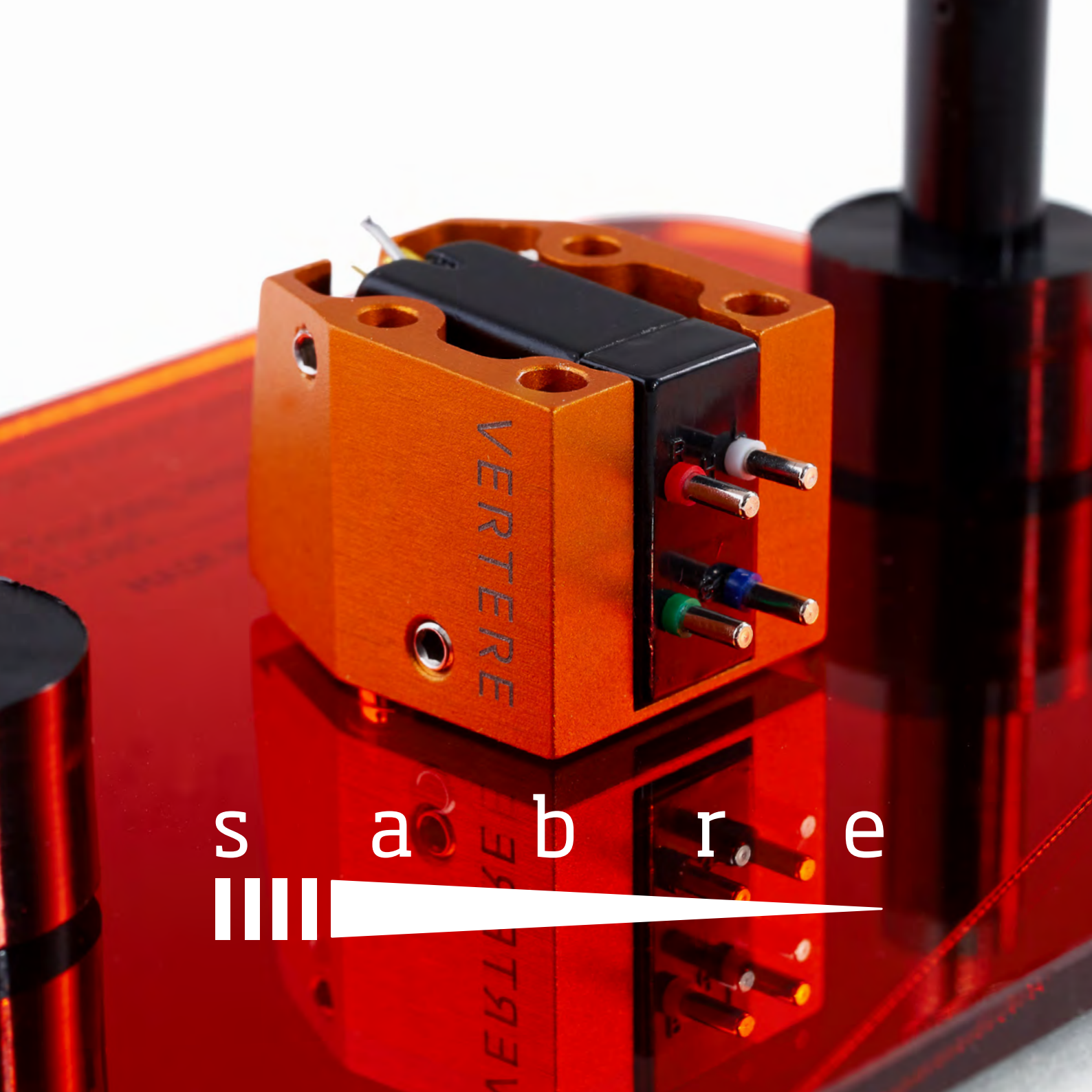
Headshell Mouting __ Special Tri-Point Contact
M2.5 Threaded Fixing Holes

Generator Fixing __ Special Quad-Point Contact
Four Stainless 'Spike' Screws

Net Weight __ 11.5g



D A R K
|||||



VERTERE

s a b r e



Take your listening to the next level



Balance, meticulous design, and granular attention to detail - it's what makes Sabre one of the most revered moving magnet cartridges in the world.

A single-piece aluminium body houses an Alnico magnet driven generator, fixed in place by four 'spike' screws positioned for maximum performance.

Sabre's body is machined from solid Aluminium alloy and mass tuned to the generator for optimum support and control of unwanted mechanical vibrations.

Mounting the cartridge is via two threaded fixing holes and Vertere stainless steel thumb screws that are also designed for correct coupling of the cartridge body to the tonearm head-shell.

Machined on top of the Sabre cartridge are three specifically designed contact points to provide the exact mechanical coupling area required by the cartridge.



The ridge on the top front of the Sabre assists with easy alignment on any complementing Vertere tonearm.

Bespoke telescopic aluminium tube cantilever and bonded Micro Elliptical diamond stylus ensure tracking ability without compromising high frequency response.

Sabre delivers superb sonic clarity for a remarkably honest, objective, and accessible listening experience.

Sabre represents a perfect upgrade option for owners of the DG-1S record player.

Specifications

Generator Type	Moving Magnet
Output	4.3mV (@ 1kHz, 5cm/sec.)
Recommended Input Load	47 kΩ 100pF - 220pF
Recommended Tracking Weight	2.0g (1.9g - 2.1g)
Frequency Response	15Hz - 25kHz
Channel Separation	> 25dB
Coil Resistance	1 kΩ (@ 1 kHz)
Dynamic Compliance	10 x 10 ⁻⁶ cm/dyne (@ 100Hz)
Magnet Type	Alnico
Mounting To Stylus	≈ 9.0mm
Head-shell To Stylus	≈ 17.5mm
Stylus	Micro Elliptical Diamond Bonded (7.5 x 15.5 μm)
Cantilever	Aluminium Alloy - Telescopic
Headshell Mounting	Special Tri-Point Contact With M2.5 Threaded Fixing Holes
Generator Fixing	Special Quad-Point Contact With Four Stainless 'Spike' Screws
Net Weight	10.3 g



—○—
M a g n e t o



The Magneto is our entry level moving magnet cartridge, offering reliable performance and excellent build quality.

It's a great option for music lovers exploring elevated record reproduction for the first time, and the perfect partner to the award-winning Vertere DG-1S.

A finely finished elliptical stylus delivers enhanced tracking accuracy, while a permalloy centre shield plate provides a reliably high frequency response.

Magneto utilises a Dual Magnet in a 'V' form configuration and Para-toroidal Coils optimising linearity output voltage generation.

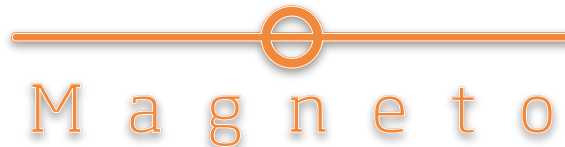
Channel separation is also improved using a permalloy centre shield plate minimising crosstalk and improving soundstage.

Magneto's bonded Elliptical diamond stylus provides a wide frequency response, excellent tracking ability and life like performance.



Specifications

Generator Type	Dual Moving Magnet
Output	4.0mV (@ 1kHz, 5cm/sec.)
Recommended Input Load	47 kΩ 100pF - 220pF
Recommended Tracking Weight	2.0g (1.8g - 2.1g)
Frequency Response	20Hz - 23kHz
Channel Separation	27dB
Coil Resistance	2700Ω @ 1 kHz
Dynamic Compliance	8×10^{-6} cm/dyne (@ 100Hz)
Magnet Type	'V' configuration
Mounting To Stylus	≈ 9.0mm
Head-shell To Stylus	≈ 17.5mm
Stylus	Elliptical Diamond, Bonded
Cantilever	Aluminium
Channel Balance	1.5dB @ 1 kHz
Net Weight	6.58 g

The logo for Magneto features a stylized orange circle with a horizontal line passing through its center. Below this graphic, the word "Magneto" is written in a large, orange, serif font with a slight glow effect.

M a g n e t o



VERTERE™

RECORD PLAYING SYSTEMS

RG-1 Reference Groove Record Player
SG-1 Super Groove Record Player
MG-1 MkII Magic Groove Record Player
DG-1S Dynamic Groove Record Player

MOTOR DRIVES

RG-1 Reference Motor Drive
imperium Precision Motor Drive
Tempo Precision Motor Drive

TONEARMS

Vertere Reference Tonearm **New Gen.**
SG-1 PTA HB Tonearm PULSE-HB Internal Wiring
SG-1 PTA Tonearm Standard PULSE Internal Wiring

PHONO CARTRIDGES

X T R A X Moving Coil Cartridge
M y s t i c Moving Coil Cartridge
D A R K HD Moving Magnet Cartridge
s a b r e HD Moving Magnet Cartridge
M a g n e t o Moving Magnet Cartridge

PHONO PREAMPLIFIER

PHONO-1 MkII L

ANALOGUE INTERCONNECT CABLES

PULSE-HB
PULSE-veRum
PULSE-Redline
D-Fi
RCA, XLR Balanced, DIN & 5-Pin Tonearm

SPEAKER CABLES

PULSE-HB
PULSE-XS Reference
PULSE-XS
PULSE-Redline
7mm, 4mm Banana & Spade - Single Ended Or Bridged Balanced

DIGITAL INTERCONNECT CABLES

PULSE-HB
PULSE-Redline
D-Fi
USB TypeA, TypeB, Mini, Micro, Ethernet RJ45
COAX-75 Ohm RCA & BNC, AES/EBU Balanced XLR

MAINS POWER CABLES & DISTRIBUTION

PULSE-HB, PULSE-HBS
HB MAINS DISTRIBUTION BLOCK & PULSE-Redline
UK, EU, US: IEC & IEC 20A

RECORD PLAYER SUPPORT

STAGE-1 REFERENCE ISOLATION PLATFORM

EQUIPMENT SUPPORT

STAND-1 REFERENCE EQUIPMENT SUPPORT

